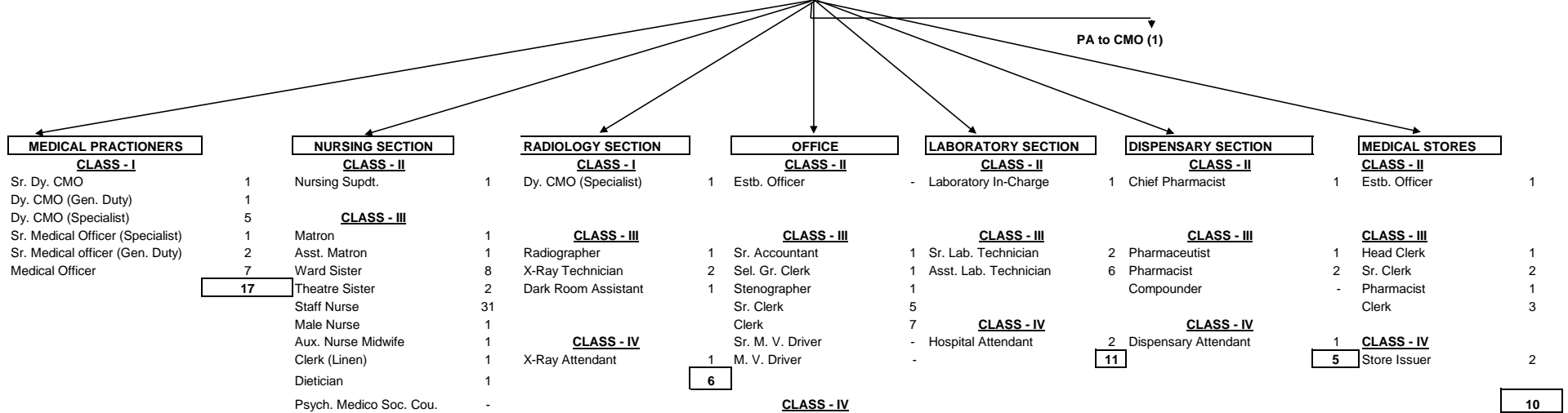


CHIEF MEDICAL OFFICER (1)



Contract (Outsourced) /Visiting	
Category	Total
Outsourced	
Gen. Duty Doctors	5
Visiting	
Cardiologist	1
Gastroenterologist	1
Ophthalmologist	2
Orthopaedic Surgeon	1
Physician	1
Gen. Surgeon	2
Urologist	1
Paediatrician	1
Obst. & Gynaecologist	1
Dentist	1
Ayurvedic Physician	1
Homeopathic Physician	1
Physiotherapist	1
Pharmacist	2
Staff Nurse	9
Dietician	1
Total	27

Psych. Medico Soc. Cou.	-
Physiotherapist	-
Tech. Gr. II (Medical)	1
Dresser In-charge	1
Head Cook	3
Hosp. Record Attender	2
CLASS - IV	
Lift Operator	2
Dresser	6
Cook	7
Hospital Attendant	22
Watchman	1
Kitchen Attendant	4
San. H/Worker Gr. II	2
Woman Khalasee	3
Malee	1
San. H/Worker Gr. III (S)	28
Sweeper	1
San. H/Worker Gr. III (K)	6
Total	138

Gen. Dy. CMO	1
Dy. CMO (Gen. Duty)	1
Dy. CMO (Specialist)	5
Sr. Medical Officer (Specialist)	1
Sr. Medical officer (Gen. Duty)	2
Medical Officer	7
Total	17
Nursing Supdt.	1
CLASS - III	
Matron	1
Asst. Matron	1
Ward Sister	8
Theatre Sister	2
Staff Nurse	31
Male Nurse	1
Aux. Nurse Midwife	1
Clerk (Linen)	1
Dietician	1
CLASS - IV	
Physiotherapist	-
Tech. Gr. II (Medical)	1
Dresser In-charge	1
Head Cook	3
Hosp. Record Attender	2
CLASS - IV	
Lift Operator	2
Dresser	6
Cook	7
Hospital Attendant	22
Watchman	1
Kitchen Attendant	4
San. H/Worker Gr. II	2
Woman Khalasee	3
Malee	1
San. H/Worker Gr. III (S)	28
Sweeper	1
San. H/Worker Gr. III (K)	6
Total	138

Dy. CMO (Specialist)	1
Estb. Officer	-
CLASS - III	
Radiographer	1
X-Ray Technician	2
Dark Room Assistant	1
X-Ray Attendant	1
CLASS - IV	
Attender	1
Peon	1
Total	19
Laboratory In-Charge	-
CLASS - III	
Sr. Accountant	1
Sel. Gr. Clerk	1
Stenographer	1
Sr. Clerk	5
Clerk	7
Sr. M. V. Driver	-
M. V. Driver	1
CLASS - IV	
Hospital Attendant	-
Total	11
Chief Pharmacist	1
CLASS - III	
Pharmaceutist	2
Pharmacist	6
Compounder	-
CLASS - IV	
Dispensary Attendant	2
Total	11
Estb. Officer	1
CLASS - III	
Head Clerk	1
Sr. Clerk	2
Pharmacist	-
Clerk	3
CLASS - IV	
Store Issuer	1
Total	10

\$ One post of Sel. Gr. Clerk and two post of Sr. Clerk promoted and retained in Medical Dept.
 \$\$ Two posts of Clerk (Outdoor) operated in Medical Dept.