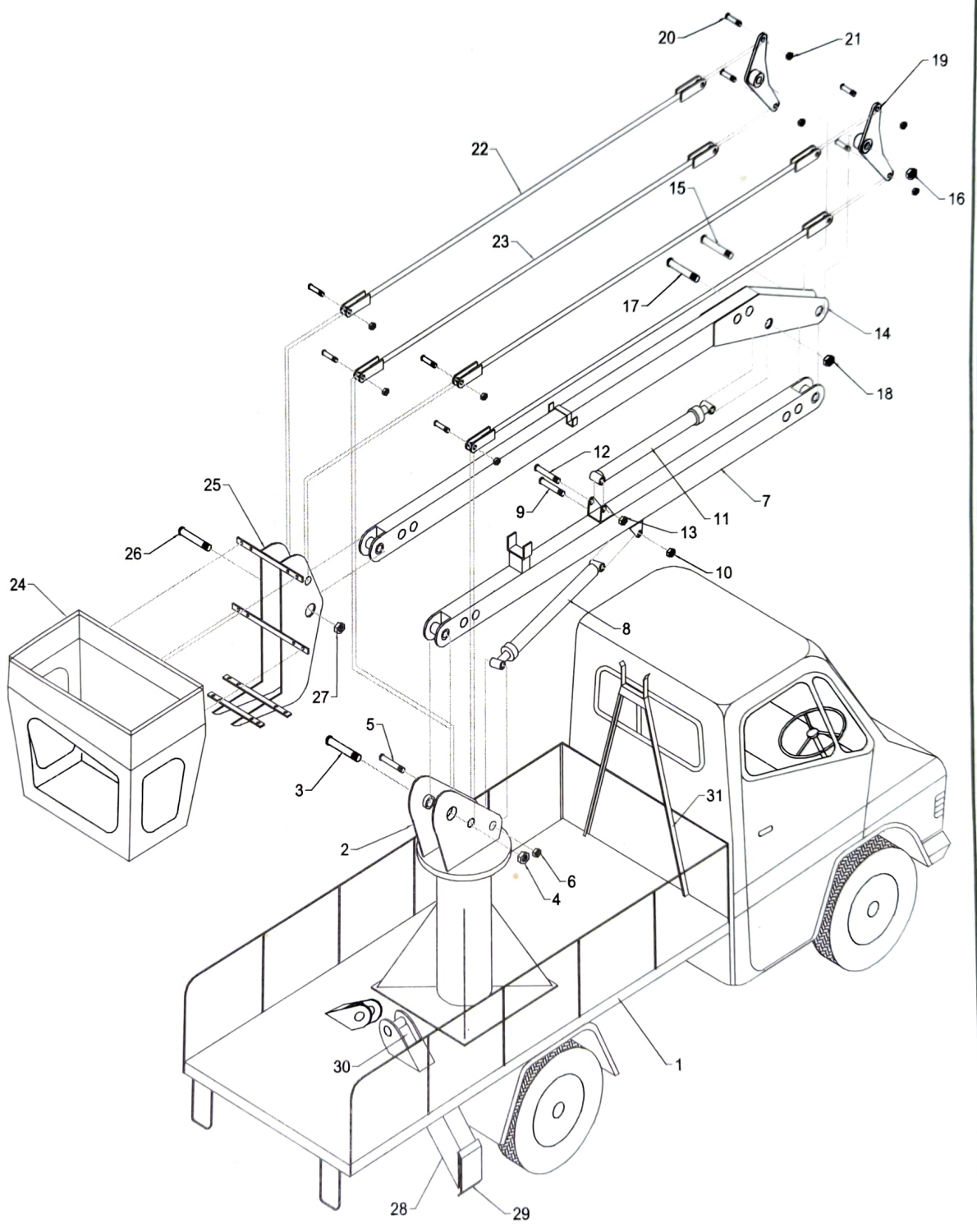


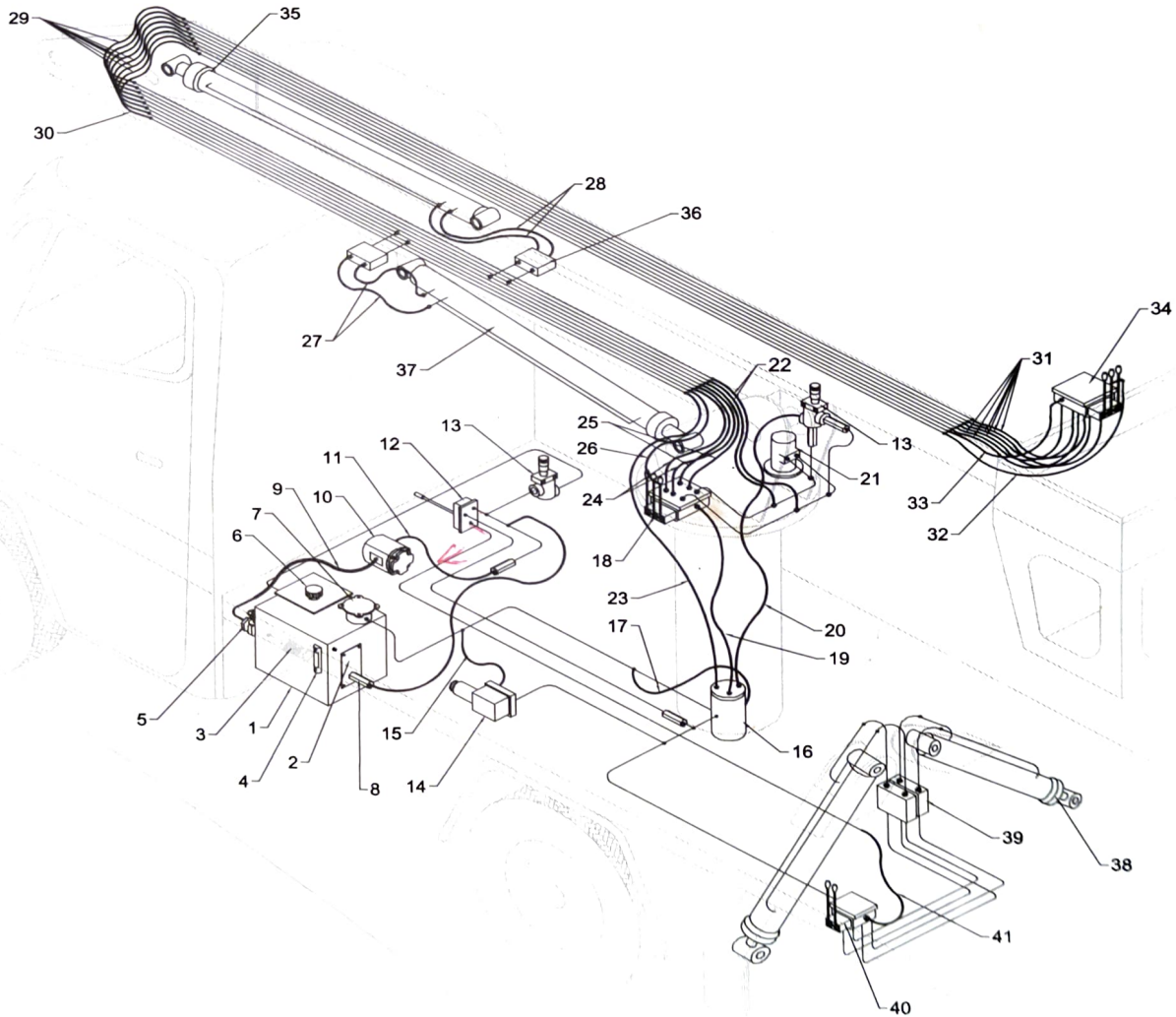
ELEVATED PLATFORM ASSEMBLY



PART LIST**ELEVATED PLATFORM ASSEMBLY**

| SR.NO. | PART CODE | PART NAME | QTY. |
|---------------|------------------|--------------------------|-------------|
| 1 | 4507.01.01 | Chassis frame | 01 |
| 2 | 4507.01.02 | Column | 01 |
| 3 | 4507.01.03 | Pin | 01 |
| 4 | 4507.01.04 | Nut | 01 |
| 5 | 4507.01.05 | Pin | 01 |
| 6 | 4507.01.06 | Nut | 01 |
| 7 | 4507.01.07 | Lower boom | 01 |
| 8 | 4507.01.08 | Lower cylinder | 01 |
| 9 | 4507.01.09 | Pin | 01 |
| 10 | 4507.01.10 | Nut | 01 |
| 11 | 4507.01.11 | Upper cylinder | 01 |
| 12 | 4507.01.12 | Pin | 01 |
| 13 | 4507.01.13 | Nut | 01 |
| 14 | 4507.01.14 | Upper boom | 01 |
| 15 | 4507.01.15 | Pin | 01 |
| 16 | 4507.01.16 | Nut | 01 |
| 17 | 4507.01.17 | Pin | 01 |
| 18 | 4507.01.18 | Nut | 01 |
| 19 | 4507.01.19 | Linkage plate | 02 |
| 20 | 4507.01.20 | Pin | 08 |
| 21 | 4507.01.21 | Nut | 08 |
| 22 | 4507.01.22 | Parallel linkage (upper) | 02 |
| 23 | 4507.01.23 | Parallel linkage (lower) | 02 |
| 24 | 4507.01.24 | Bucket | 01 |
| 25 | 4507.01.25 | Bucket mounting bracket | 01 |
| 26 | 4507.01.26 | Pin | 01 |
| 27 | 4507.01.27 | Nut | 01 |
| 28 | 4507.01.28 | Stabilizer | 02 |
| 29 | 4507.01.29 | Swivel pad | 02 |
| 30 | 4507.01.30 | Stabilizer cylinder | 02 |
| 31 | 4507.01.31 | Boom stand | 01 |

HYDRAULIC LINE



HYDRAULIC LINE ASSEMBLY

| SR.NO. | PART CODE | PART NAME | QTY. |
|--------|------------|---|------|
| 1 | 4507.02.01 | Oil tank | 01 |
| 2 | 4507.02.02 | Hand pump | 01 |
| 3 | 4507.02.03 | Suction strainer ✓ | 01 |
| 4 | 4507.02.04 | Oil level indicator | 01 |
| 5 | 4507.02.05 | Gate valve ✓ | 01 |
| 6 | 4507.02.06 | Filler breather | 01 |
| 7 | 4507.02.07 | Return line filter ✓ | 01 |
| 8 | 4507.02.08 | Inline check valve | 05 |
| 9 | 4507.02.09 | Flexible hose (pump suction) ✓ 1 | 01 |
| 10 | 4507.02.10 | Pump | 01 |
| 11 | 4507.02.11 | Flexible hose (pump to single lever c.v) 2 | 01 |
| 12 | 4507.02.12 | Control valve (single lever) | 01 |
| 13 | 4507.02.13 | Pressure relief valve | 02 |
| 14 | 4507.02.14 | Solenoid valve | 01 |
| 15 | 4507.02.15 | Flexible hose (solenoid to oil tank) ✓ 3 | 01 |
| 16 | 4507.02.16 | Rotary joint | 01 |
| 17 | 4507.02.17 | Flexible hose (rotary to oil tank) ✓ 4 | 01 |
| 18 | 4507.02.18 | Lower Control valve (3-lever) | 01 |
| 19 | 4507.02.19 | Flexible hose (rotary to control valve) ✓ 5 | 01 |
| 20 | 4507.02.20 | Flexible hose (relief valve to rotary) ✓ 6 | 01 |
| 21 | 4507.02.21 | Hydro motor | 01 |
| 22 | 4507.02.22 | Flexible hose (lower c.v to lower boom) ✓ 7 | 02 |
| 23 | 4507.02.23 | Flexible hose (rotary to lower boom) ✓ 8 | 01 |
| 24 | 4507.02.24 | Flexible hose (lower c.v to lower boom) ✓ 9 | 02 |
| 25 | 4507.02.25 | Flexible hose (lower c.v to lower boom) ✓ 10 | 02 |
| 26 | 4507.02.26 | Flexible hose (lower c.v to lower boom) ✓ 11 | 01 |
| 27 | 4507.02.27 | Flexible hose (to lower boom cylinder) ✓ 12 | 02 |
| 28 | 4507.02.28 | Flexible hose (to upper boom cylinder) ✓ 13 | 02 |
| 29 | 4507.02.29 | Flexible hose (lower boom to upper boom) ✓ 14 | 07 |
| 30 | 4507.02.30 | Flexible hose (lower boom to upper boom) ✓ 15 | 01 |

| | | | |
|----|------------|---|----|
| 31 | 4507.02.31 | Flexible hose (upper boom to upper c.v) ✓16 | 06 |
| 32 | 4507.02.32 | Flexible hose (upper boom to upper c.v) ✓17 | 01 |
| 33 | 4507.02.33 | Flexible hose (upper boom to upper c.v) ✓18 | 01 |
| 34 | 4507.02.34 | Upper control valve (3-lever) | 01 |
| 35 | 4507.01.11 | Upper boom cylinder | 01 |
| 36 | 4507.02.35 | DLVT (for upper & lower boom cylinder) | 02 |
| 37 | 4507.01.08 | Lower boom cylinder | 01 |
| 38 | 4507.01.30 | Stabilizer cylinder | 02 |
| 39 | 4507.02.36 | DLVT (for stabilizer cylinder) | 02 |
| 40 | 4507.02.37 | Control valve (2-lever) | 01 |
| 41 | 4507.02.38 | Flexible hose (single lever c.v to 2-lever c.v) ✓19 | 01 |