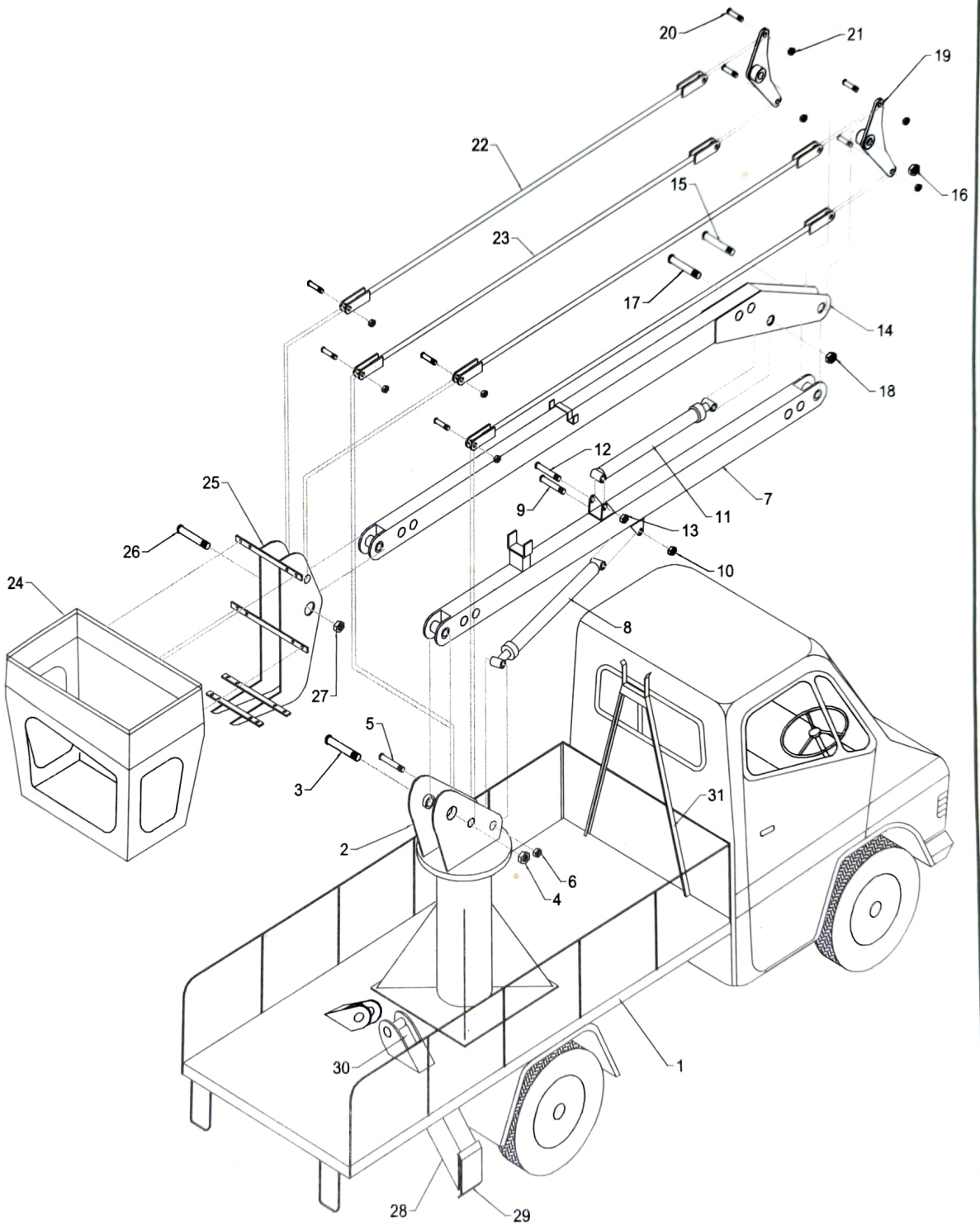


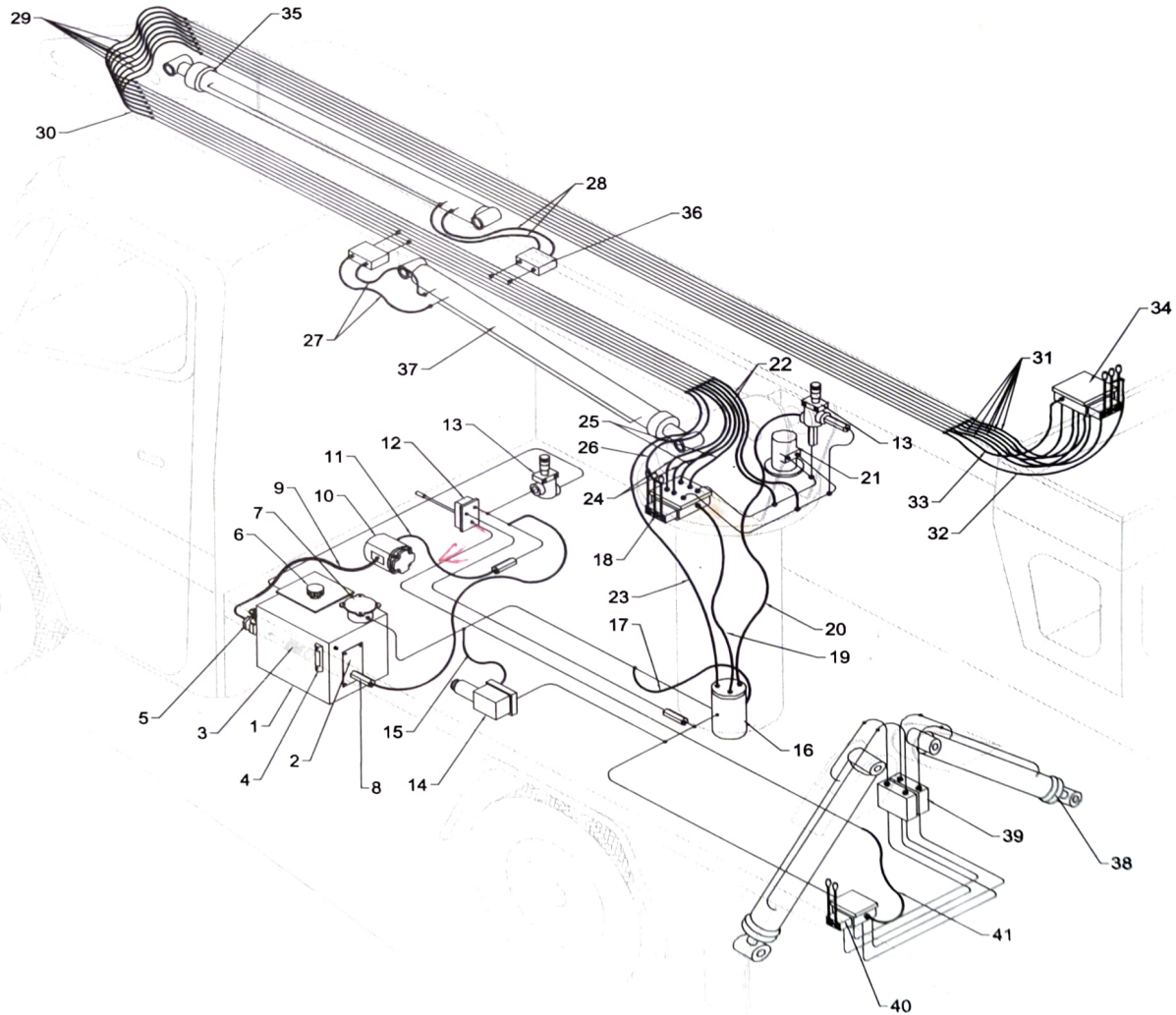
ELEVATED PLATFORM ASSEMBLY



PART LIST**ELEVATED PLATFORM ASSEMBLY**

SR.NO.	PART CODE	PART NAME	QTY.
1	4507.01.01	Chassis frame	01
2	4507.01.02	Column	01
3	4507.01.03	Pin	01
4	4507.01.04	Nut	01
5	4507.01.05	Pin	01
6	4507.01.06	Nut	01
7	4507.01.07	Lower boom	01
8	4507.01.08	Lower cylinder	01
9	4507.01.09	Pin	01
10	4507.01.10	Nut	01
11	4507.01.11	Upper cylinder	01
12	4507.01.12	Pin	01
13	4507.01.13	Nut	01
14	4507.01.14	Upper boom	01
15	4507.01.15	Pin	01
16	4507.01.16	Nut	01
17	4507.01.17	Pin	01
18	4507.01.18	Nut	01
19	4507.01.19	Linkage plate	02
20	4507.01.20	Pin	08
21	4507.01.21	Nut	08
22	4507.01.22	Parallel linkage (upper)	02
23	4507.01.23	Parallel linkage (lower)	02
24	4507.01.24	Bucket	01
25	4507.01.25	Bucket mounting bracket	01
26	4507.01.26	Pin	01
27	4507.01.27	Nut	01
28	4507.01.28	Stabilizer	02
29	4507.01.29	Swivel pad	02
30	4507.01.30	Stabilizer cylinder	02
31	4507.01.31	Boom stand	01

HYDRAULIC LINE



HYDRAULIC LINE ASSEMBLY

SR.NO.	PART CODE	PART NAME	QTY.
1	4507.02.01	Oil tank	01
2	4507.02.02	Hand pump	01
3	4507.02.03	Suction strainer ✓	01
4	4507.02.04	Oil level indicator	01
5	4507.02.05	Gate valve ✓	01
6	4507.02.06	Filler breather	01
7	4507.02.07	Return line filter ✓	01
8	4507.02.08	Inline check valve	05
9	4507.02.09	Flexible hose (pump suction) ✓ 1	01
10	4507.02.10	Pump	01
11	4507.02.11	Flexible hose (pump to single lever c.v) 2	01
12	4507.02.12	Control valve (single lever)	01
13	4507.02.13	Pressure relief valve	02
14	4507.02.14	Solenoid valve	01
15	4507.02.15	Flexible hose (solenoid to oil tank) ✓ 3	01
16	4507.02.16	Rotary joint	01
17	4507.02.17	Flexible hose (rotary to oil tank) ✓ 4	01
18	4507.02.18	Lower Control valve (3-lever)	01
19	4507.02.19	Flexible hose (rotary to control valve) ✓ 5	01
20	4507.02.20	Flexible hose (relief valve to rotary) ✓ 6	01
21	4507.02.21	Hydro motor	01
22	4507.02.22	Flexible hose (lower c.v to lower boom) ✓ 7	02
23	4507.02.23	Flexible hose (rotary to lower boom) ✓ 8	01
24	4507.02.24	Flexible hose (lower c.v to lower boom) ✓ 9	02
25	4507.02.25	Flexible hose (lower c.v to lower boom) ✓ 10	02
26	4507.02.26	Flexible hose (lower c.v to lower boom) ✓ 11	01
27	4507.02.27	Flexible hose (to lower boom cylinder) ✓ 12	02
28	4507.02.28	Flexible hose (to upper boom cylinder) ✓ 13	02
29	4507.02.29	Flexible hose (lower boom to upper boom) ✓ 14	07
30	4507.02.30	Flexible hose (lower boom to upper boom) ✓ 15	01

31	4507.02.31	Flexible hose (upper boom to upper c.v) ✓16	06
32	4507.02.32	Flexible hose (upper boom to upper c.v) ✓17	01
33	4507.02.33	Flexible hose (upper boom to upper c.v) ✓18	01
34	4507.02.34	Upper control valve (3-lever)	01
35	4507.01.11	Upper boom cylinder	01
36	4507.02.35	DLVT (for upper & lower boom cylinder)	02
37	4507.01.08	Lower boom cylinder	01
38	4507.01.30	Stabilizer cylinder	02
39	4507.02.36	DLVT (for stabilizer cylinder)	02
40	4507.02.37	Control valve (2-lever)	01
41	4507.02.38	Flexible hose (single lever c.v to 2-lever c.v) ✓19	01